



SMART RAIL

CONGRESS &
EXPO

24-26 February 2014
Hotel Okura, Amsterdam

SHOWCASING TECHNOLOGY,
INVESTMENT AND
DEPLOYMENT FOR THE
FUTURE RAILWAY



1 SHOW: NEW IDEAS | NEW TECHNOLOGIES | NEW RELATIONSHIPS

3

day
congress

140+

case
studies

100+

speakers

30+

exhibitors

5

streams

1000+

attendees

SPONSORS &
EXHIBITORS

kapsch >>>

Terrasolid
Software for 3D & 4D Processing

amadeus
Your technology partner

Lufthansa Systems
OT World enables you to fly smarter

FLIR



RADIO FREQUENCY SYSTEMS
The clear choice

HASLERail

icomera

eurailtest

OTN Systems

ORGANISED BY:



Quote **SMEBR1** when registering to save 10% on your pass:
www.SmartRailExpo.com

£3.5 BILLION

Railways that take advantage of technical and technological developments could see potential savings of £3.5 billion by 2019. (RTS 2012)

5 YEAR TRACK RECORD

A 5-year track record in hosting the most respected rail and metro events globally

1600 VISITORS

Over 1600 visitors attended our signalling and telecom events in 2013

CREATING A MEETING PLACE FOR THE WHOLE VALUE CHAIN

To remain competitive, the railway must satisfy its customers. With technology evolving and passenger demands growing, railways and metros are increasingly looking for more innovative ways to integrate systems and improve efficiency, commercial and operational performance. **Over 90 of our global advisors** from leading railways and metros such as ProRail, RFF and Network Rail have highlighted that to create this future railway, collaboration across all departments and stakeholders is key. The customer must be at the heart of new developments.

SmartRail brings together the **5th annual Signalling and Train Control show** with the **4th annual Railway**

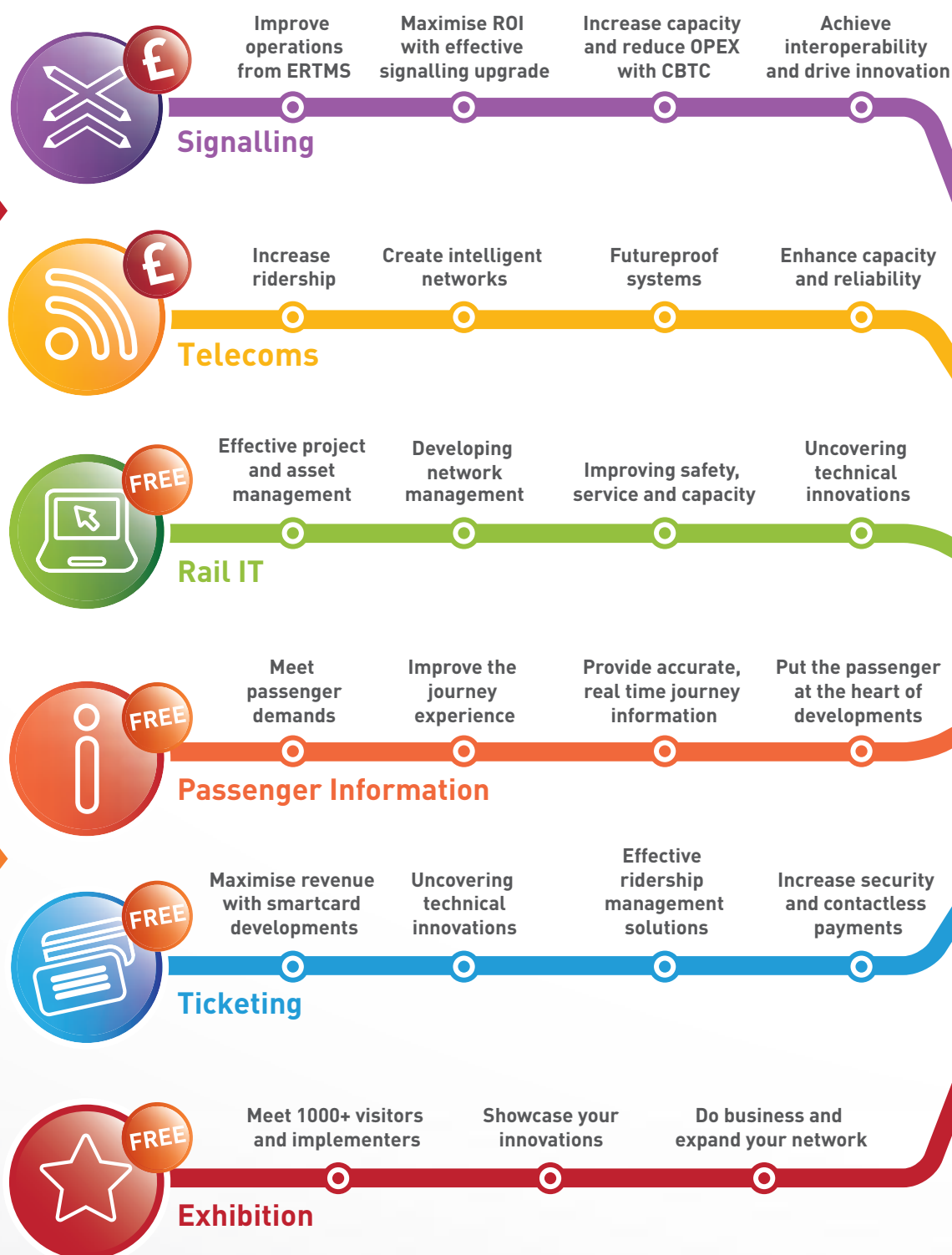
Telecoms show to enable innovation and integration to take place. These high level strategic **congresses** are combined with a **free exhibition** and **on-floor innovation seminars** on IT, passenger information and ticketing, so your strategic and technical teams can benefit from unrivalled insight across the whole value chain.

SmartRail attracts over **1000 rail and metro innovators**, strategic leaders, project managers and technical specialists from across the industry to drive innovation, establish best practice and develop an efficient, reliable and competitive future railway.



£ STRATEGIC CONGRESS LINES

FREE INNOVATION SEMINAR LINES



24-26 February 2014 • Amsterdam

THE COMPETITIVE AND SUSTAINABLE RAILWAY OF THE FUTURE



“Excellent for networking, great insights
for strategy implementation.”

Kurt Schmid, SBB

OUR GLOBAL SMARTAIL ADVISORY BOARD INCLUDES:

Jim Allison
Planning Manager
CCJPA

Jim Baker
Chair
Technology Committee
Joint Council on Transit
Wireless Communications

Richard Barrett
Principal Engineer
Signals
AECOM

Jacob Baseliyos
Technology specialist
Deutsche Bahn

Tony Bispeskov
Manager of Traffic
Information
Department
DSB

Kyle Brimley
Manager
Technology Department
Utah Transit Authority

Arne Boralv
CEO
Prover Technology

Paul Broekhuizen
Director
Transportation West Europe
Huawei

Jean Cellmer
Director GSM-R
RFF

Alexander Clark
Sales Director
North America East
Fluidmesh

Ken Cowley
Product Manager
Nomad Digital

Gino Di Mambro
International Business
Manager
Italcertifer

Jason Durk
Head of Passenger
Information
National Rail Enquiries

Barry Einsig
Chairman
Joint Council on Transit
Wireless Communications

Bill Everett
Senior Principal Business
Analyst
ARINC

Jean-Michel Evangelou
Head of Market and
Portfolio
Strategy
Kapsch

George Hacken
Senior Director
Vital System
NYCT

Christian Haas
Director Global Partner Sales
Keymile Ag

Jos Holtzer
Head of Project Management
and Support
NS Passengers

Mats Karlsson
Business Development &
Sales
Icomera

Jan Koning
Strategic Consultant
Movares

Eva Kreienkamp
CEO
Hamburg Koln Express

Tim Lane
Principal Engineer
(Strategy & Innovation)
Network Rail Telecoms

Dan Lindstrom
Wayside Systems Manager
Los Angeles County
Metropolitan Transportation
Authority

Joerg Matschiner
Vice President
Global Sales
Siemens

Claudio Ottombrino
Key Account Manager
Expandium

Francesco Prato
Director Sales and Business
Development
Siemens Transportation

Peter Raabe
Global Product Line Director
RFS World

Fabio Senesi
Head of ATC Systems
RFI

John Stafford
Control-Command Signal
Engineer
RSSB

Richard Thomas
Customer Relationship
Manager
Cubic Transportation
Systems

Brord Vandusseldorp
Senior Consultant
Scheidt & Bachmann GmbH

Manuel Villalba
Director of Innovation
CAF Signalling

Wolfgang Wenzel
Sales Director
Public Transport
Frequentis

Karl Witbeck
Vice-Chair
Technology Committee
Joint Council on
Transit Wireless
Communications

KEY SPEAKERS INCLUDE:



Libor Lochman,
Executive Director,
CER



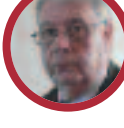
Stephane Ouaki,
Head of Unit (Move B4)
Connecting Europe
Infrastructure investment
strategies,
DG Move



Eva Kreienkamp,
CEO,
Hamburg Koln Express



Trevor Garrod
Chairman
European Passenger
Federation



Brian Ellis
Principal Engineer
Control Command & Signalling
The Office of Rail Regulation



Armand Toubol,
Civil Engineer Logistics
Consultant Manager,
New Opera



Tony Bispeskov
Manager of Traffic
Information
DSB



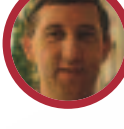
Christian Schang,
Project Director,
SNCF INFRA



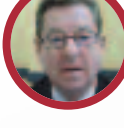
Pio Guido
Head of Unit ERTMS
European Railway Agency



Simon Whitehorn,
Programme Manager ETCS,
Network Rail



Marc Antoni
Head of Innovation
Technologies
SNCF



John Berry,
Principal Administrator,
European Commission
(DG Move)



Moritz Schlee,
Head of RTPI on-board
Information,
Deutsche Bhan



Kurt Schmid
Head of Rail
Communications
SBB

SPEAKER HIGHLIGHTS:

Fivos Adritsos
Technical Manager
Joint Research Centre
European Commission

Marina Aguado
Associate Professor
University of the Basque
Country

Ozgur B. Akan
Professor
Department of Electrical &
Electronics Engineering
Koc University

Bader Alatni
Signalling and Telecom
Operations Manager
Saudi Railways

Joan Amorós
Secretary General
FERRMED

Marc Antoni
Head of Innovation
Technologies
SNCF

Jim Baker
Chair
Technology Committee
Joint Council on Transit
Wireless Communications

Jacob Baseliyos
Technology Specialist
Deutsche Bahn

Reiner Behnsch
Head of Technology
Management ETCS
DB Netz AG

John Berry
Principal Administrator
European Commission,
DG Move

Roni Bello Ahmed
Deputy Director Signalling
and Telecoms
Nigerian Railway
Corporation

Hans Bier
Project Leader
European Railway Agency

Hans Bier Lien
ETCS Advisor
Project Leader
European Railway Agency

Tony Bispeskov
Manager of Traffic
Information
DSB

Jenni Borg
Head of Smart and
Integrated ticketing
Department of Transport UK

Steve Budd
Manager, Public Transport
Technology
New Zealand Transport
Agency

Sam Burns
SIT Programme Manager
Transport Scotland

Matthew Bromley
Station Manager Marylebone
Chiltern Railways

Laurent Cremer
Executive Director
OSPT Alliance

Gino Dimambro
International Business
Manager
Italcertifer

Thomas Drexler
Global Head of Rail & Ground
Transportation
Amadeus

Jason Durk
Head of Passenger
Information
National Rail Enquiries

Brian Ellis
Principal Engineer
Control Command &
Signalling
The Office of Rail Regulation

Ruetger Fenkes
Head of Project and
Programme Management
DB Mobility & Logistics AG

Bent Flyen
Advisor in RTI Systems
IT Operations
NSB

Alberto Forchino
Head of Special Engineering
Projects
Turin Metro

Andreas Fuhrer
Head of IT Solution Line
Planning & Production
SBB

Trevor Garrod
Chairman
European Passenger
Federation

Andrea Gasparri
Head of Customer Operation
Italo Trains

Pio Guido
Head of Unit ERTMS
European Railway Agency

David Gorshkov
CEO
Digital Grape Business
Services

Anshul Gupta
Executive Director
RailTel Ministry of Railways

Klavs Hestbek Lund
Project Director
Metroselskabet

Anna Holness
Managing Partner
Passenger Services Practice
Telefonica UK

Jos Holtzer
Head of Project
Management & Support
NS Passengers

Rune Mikkelsen
Project Manager, Signalling
Programme
DSB

David Johnson
Programme Manager
National Rail Enquiries

Talhat Khechen
Head of Engineering
Service Telecom
RFF

Petr Kolar
Systems Specialist
Czech Railways

Eva Kreienkamp
CEO
Hamburg Koln Express

Andreas Küster
Group Leader
Traffic Information &
Management
Fraunhofer Institute for
Transportation and
Infrastructure Systems

Chris Lane
Head of Intelligent Systems
Centro

Libor Lochman
Executive Director
CER

Eduardo Monari
Head of Research Group
Image-based Real-Time
Systems
Fraunhofer IOSB

Sylvain Mossman
ETCS Operations Director
RFF

Ayse Orbay Kaya
Vice President
Business Development
BKM

Stephane Ouaki
Head of Unit, Move B4
Infrastructure Investment
Strategies
DG Move

Christian Pettauer
Chief Information Officer
WESTbahn GmbH

Philip Quenby
Ticketing technical specialist
Transperth programme,
Australia

Raffaele Raspanti
Head of IT Operations
NTV

Simon Reed
Head of Technical Services
London Buses
Transport for London

Stefan Roseanu
Senior Partner
Club Feroviar

Steve Roberts
Head of Traffic Operations &
Management
RSSB

Aurelio Rojo
Garrido, Secretary General
Alamys

Javier Rubio Bellod
Project Manager Rail System
Lausanne Metro

Klaus-Rudiger Hase
ETCS Project Leader
Deutsche Bhan

Michel Ruesen
Managing Director
ERTMS Users Group

Ankala Saibaba
Chief Engineer
Indian Railways

Mika Salolahti
Business Development
Manager
Terrasolid

Danilo Sirmik
Chief of Development
Slovenian Railways

Christian Schang
Project Director
SNCF INFRA

Register for your delegate pass: www.SmartRailExpo.com



MONDAY 24 FEBRUARY 2014

10:30 SMARTRAIL EXHIBITION HALL OPEN
PAID CONTENT: STRATEGIC CONGRESSES

STRATEGIC SMARTRAIL CONGRESS

The 2014 SmartRail congress includes the 5th annual Signalling and Train Control show and the 4th annual Railway Telecoms show, providing key executive and strategic insights on the future of signalling and telecom investment and deployment. The strategic congress provides an ideal opportunity for interaction, debate, best practice sharing and networking, with your pass providing exclusive access to executive think tanks, both congresses and our VIP networking zone.

10:30 Congress Registration and VIP Networking Coffee

11:10 OFFICIAL CONGRESS OPENING

RAIL LEADERS THINK TANK: INVESTING AND FINANCING THE TRAIN OF THE FUTURE

11:15 Moderator introduction to session: Investing in the train of the future to remain competitive
Armand Toubol, Civil Engineer Logistics Consultant Manager, **New Opera**

11:30 Think tank Panel: What does the railway of the future look like, and how can it be financed?
Libor Lochman, Executive Director, **CER**
Stephane Ouaki, Head of Unit (Move B4) Connecting Europe Infrastructure investment strategies, **DG Move**
Michel Ruesen, Managing Director, **ERTMS Users Group**
Ayse Orbay Kaya, Senior Development Vice President, **BKM**
Eva Kreienkamp, CEO, **Hamburg Koln Express**
Aurelio Rojo Garrido, Secretary General, **Alamy**

12:15 Audience Q&A session

12:30 Moderator conclusion to Finance Think Tank

12:45 Networking Lunch in the VIP Section of the Exhibition Room

RAIL LEADERS THINK TANK: PUTTING THE PASSENGER AT THE HEART OF DEVELOPMENT

14:00 Moderator introduction to session: Satisfying passengers through innovation
Armand Toubol, Civil Engineer Logistics Consultant Manager, **New Opera**

14:15 Think tank Panel: Placing the passenger at the heart of innovation to increase competitiveness
Eva Kreienkamp, CEO, **Hamburg Koln Express**
Anna Holness, Managing Partner, Passenger Services Practice, **Telefonica UK**
Trevor Garrod, Chairman, European Passenger Federation
Christian Pettau, CIO, **WESTbahn**
Ian Wright, Head of Research, **Passenger Focus**
Andrea Gasparri, Head of Customer Operations, **Italo Trains**

15:00 Audience Q&A session

15:15 Moderator conclusion to Passenger Think Tank

15:30 Networking Coffee in the VIP Section of the Exhibition Room

INNOVATION: A WHOLE SYSTEMS APPROACH

16:20 Case study: Increasing reliability, availability and safety from a whole systems approach
Brian Ellis, Principal Engineer, Control Command & Signalling, **The Office of Rail Regulation**

16:35 Case study: Learning from other industries: Innovation in the automobile sector
Andreas Grof, Business Development Manager, **Spokesman Eclipse Automobile Industry WG**
Baseliyos Jacob, Technology Specialist, **DB Netz AG**

16:50 Case study: Learning from other industries: Innovation in the aerospace sector
openETCS learns from the aerospace sector and joins PolarSys, an Eclipse Industrial Working Group
Klaus-Rüdiger Hase, Project Leader, openETCS, **DB Netz AG**
Pierre GAUFILLET, PolarSys chairman, **AIRBUS**

17:05 Cross industry panel: Driving innovation in the transport sector
Brian Ellis, Principal Engineer, Control Command & Signalling, **The Office of Rail Regulation**
Klaus-Rüdiger Hase, Project Leader, openETCS, **DB Netz AG**
Pierre GAUFILLET, PolarSys chairman, **AIRBUS**
Baseliyos Jacob, Technology Specialist, **DB Netz AG**
Andreas Grof, Spokesperson & Business Development Manager, **Eclipse Automobile Industry WG**

19:00 END OF DAY ONE

FREE

FREE INNOVATION SEMINARS

The free to attend on-floor innovation seminars provide an unrivalled opportunity to uncover the latest technical insights across IT, passenger information and ticketing & fare collection. Each of the innovation zones feature technical leaders and CTO's outlining their latest projects and vision for technological development.



INNOVATION SEMINAR ROOM A: RAIL IT & WIFI

A1: 4G, LTE AND HIGH SPEED CONNECTIVITY

14:00 Case study: Next-generation trackside networks for passenger and operational applications
Jim Baker, Chair, Technology Committee, **Joint Council on Transit Wireless Communications**

14:15 Case study: The impact of 4G networks on rail comms

14:30 Case study: mission critical train communications
Reserved for **Terrasolid**

14:45 Case study: Managing bandwidth on your rail network

A2: IT AND TRANSMISSION NETWORKS

16:20 Case study: Developing a durable and low cost transmission network

16:35 Case study: Overcoming the challenge of in-tunnel wireless connectivity
Peter Raabe, Global Product Line Director, **Radio Frequency Systems**

16:50 Case study: Adopting a formal proofing methodology to enhance efficiency
Marc Antoni, Head of Innovation Technologies, **SNCF**

17:05 Case study: Developing reliable networks to react to changing demands
Reserved for **Kapsch**

17:45 END OF DAY ONE



INNOVATION SEMINAR ROOM B: PASSENGER ENGAGEMENT AND PIS

B1: IMPROVING THE END TO END JOURNEY WITH PIS

14:00 Case study: Meeting evolving customer requirements successfully
Nick Wilson, Customer Information Strategy Manager, **ATOC**

14:15 Case study: Developing a SMART intermodal navigation system for the passenger
Andreas Küster, Group Leader, **Traffic Information & Management, Fraunhofer Institute for Transportation and Infrastructure Systems**

14:30 Case study: Ensuring staff performance to provide effective measuring of passenger information
Tony Bispekov, Manager of Traffic Information department, **DSB**

14:45 Case study: Improving the passenger journey with onboard information systems
Moritz Schlee, Head of RTPI on-board Information, **Deutsche Bhan**

B2: PASSENGER ENGAGEMENT

16:20 Case study: From passenger to customer: creating a customer centric culture
Ian Wright, Head of Research, **Passenger Focus**

16:35 Case study: 3 ways to help the 21st century traveller choose rail
Thomas Drexler, Global Head of Rail & Ground Transportation, **Amadeus**

16:50 Case study: Providing timely live information to the passenger to increase engagement
Jason Durk, Head of Passenger Information, **National Rail Enquiries**

17:05 Case study: Strategies for engaging the passenger online
Eva Kreienkamp, CEO, **Hamburg Koln Express**

17:45 END OF DAY ONE



INNOVATION SEMINAR ROOM C: FARE COLLECTION AND TICKETING

C1: NEXT GENERATION TICKETING TECHNOLOGY

14:00 Case study: Creating an integrated and accesible ticketing system for the passenger
Ayse Orbay Kaya, Senior Development Vice President, **BKM**

14:15 Case study: Creating a smart, next generation ticketing system
Andreas Fuhrer, Head of IT Solution Line Planning & Production, **SBB**

14:30 Case study: Catalysing the development and adoption of innovative fare collection technologies
Laurent Cremer, Executive Director, **OSPT Alliance**

14:45 Case study: Delivering a future ticketing system across London
Jenni Borg, Head of smart and integrated ticketing, **Department for Transport UK**

C2: SMARTCARD SCHEMES AND OPEN LOOP SYSTEMS IN OPERATION

16:20 Case study: Developing successful multimodal and cross boarder smartcard schemes
John Berry, Principal Administrator, **European Commission (DG Move)**

16:50 Case study: Successfully evolving an effective smartcard scheme
Steve Budd, Manager, Public Transport Technology, **New Zealand Agency**

17:05 Case study: NFC technology: A promising option for transport ticketing & passenger information integration
Dusan Zalar, Undersecretary Directorate for Transport, **Ministry for Infrastructure and Spatial Planning**

17:45 END OF DAY ONE



“A unique opportunity to network, share experience and pull knowledge about the latest world class developments and solutions.”
Phil Bartlett, Booz & Company



TUESDAY 25 FEBRUARY 2014

08:45 SMARTRAIL EXHIBITION HALL OPEN
PAID CONTENT: STRATEGIC CONGRESSES



SIGNALLING AND TRAIN CONTROL PLENARY ROOM

08:15 Congress Registration and VIP Networking Coffee ☕

TECHNOLOGY AND LONG TERM INVESTMENT PLANS

- 09:05 **Case study: Defining the signalling system that meets your long term needs at minimum cost**
Sylvain Mossman, ETCS Operations Director, **RFF**
- 09:20 **Case study: Building next generation evolutions into your capital investment plan**
Danilo Sirnik, Chief of Development, **Slovenian Railways**
- 09:35 **Case study: CBTC Vs ERTMS: the impact on CAPEX and long term operations**
Rune Mikkelsen, Project Manager, Signaling Programme, **DSB**
- 09:50 **Case study: Balancing operations with cost effectiveness**
Simon Whitehorn, Programme Manager ETCS, **Network Rail**
- 10:05 **Panel: Developing a long term plan for signalling upgrades to allow for evolutions and maximise ROI**
Danilo Sirnik, Chief of Development, **Slovenian Railways**
Javier Rubio Bellod, Project Manager Rail System, **Lausanne Metro**
Sylvain Mossman, ETCS Operations Director, **RFF**
Yusuf Yabar, Signalling Manager, **TCDD**
Rune Mikkelsen, Project Manager, Signaling Programme, **DSB**
Simon Whitehorn, Programme Manager ETCS, **Network Rail**
- 10:30 **Networking Coffee in the VIP Section of the Exhibition Room** ☕

MAINLINE PROJECT FOCUS: THE IMPACT OF ERTMS ON OPERATIONS

- 11:20 **Case study: Facilitating and speeding up ERTMS deployment: overview of the actions on EU**
Michel Ruesen, Managing Director, **ERTMS Users Group**
- 11:35 **Case study: Ensuring successful migration and integration of rolling stock and infrastructure**
Reserved for **Lloyd's Register Rail Europe B.V.**
- 11:50 **Case study: Exploiting the full functionality of ERTMS to improve operations**
Ivan Thielemans, Head of Network Access, **Infrabel**
- 12:05 **Case study: Ensuring successful operations for the largest ETCS Level 2 project in the Middle East**
Bader Alatni, Signaling and Telecoms Operations Manager, **Saudi Railways**
- 12:20 **Panel: Optimising operations and service with ERTMS**
Michel Ruesen, Managing Director, **ERTMS Users Group**
Jacob Baseliyos, Technology Specialist, **Deutsche Bhan**
Ivan Thielemans, Head of Network Access, **Infrabel**
Roni Bello Ahmed, Deputy Director Signalling and Telecoms, **Nigerian Railway Corporation**

Bader Alatni, Signaling and Telecoms Operations Manager, **Saudi Railways**
Ankara Saibaba, Chief Engineer, **Indian Railways**

12:45 **Networking Lunch in the VIP Section of the Exhibition Room** ☕

METRO PROJECT FOCUS: THE IMPACT OF CBTC ON OPERATIONS

- 14:05 **Case study: Maximising capacity and reliability with CBTC**
Alberto Forchino, Head of Special Engineering Projects, **Turin Metro**
- 14:20 **Case study: Increasing automation to enhance service and reduce costs**
Aurelio Rojo Garrido, Secretary General, **Alamys**
- 14:35 **Case study: Successfully resigalling metro networks to improve performance**
Reserved for London Underground
- 14:50 **Case study: Exploiting CBTC to ensure good performance long term**
- 15:05 **Panel: Enhancing capacity and reducing OPEX with CBTC**
Alberto Forchino, Head of Special Engineering Projects, **Turin Metro**
Aurelio Rojo Garrido, Secretary General, **Alamys**
- 15:30 **Networking Coffee in the VIP Section of the Exhibition Room** ☕

INTEROPERABILITY AND INNOVATION

- 16:20 **Case study: Developing innovation and interchangeability with Open ETCS**
Klaus-Rudiger Hase, ETCS Project Leader, **Deutsche Bhan**
- 16:35 **Case study: Ensuring interoperability between freight and passenger lines**
Joan Amorós, Secretary General, **FERRMED**
- 16:50 **Case study: Using system integration to speed up ETCS deployment**
Reiner Behnsch, Head of Technology Management ETCS, **DB Netz AG**
- 17:05 **Case study: Enabling fleet-wide monitoring for ETCS**
Erik Van Bakkum, Project Manager Beproevingen, ERTMS Pilot Amsterdam-Utrecht, **NS Passengers**
- 17:20 **Panel: Achieving interoperability and interchangeability to improve competitiveness and drive innovation**
Klaus-Rudiger Hase, ETCS Project Leader, **Deutsche Bhan**
Simon Whitehorn, Programme Manager ETCS, **Network Rail**
Dr Reiner Behnsch, Head of Technology Management ETCS, **DB Netz AG**
Joan Amorós, Secretary General, **FERRMED**
Erik Van Bakkum, Project Manager Beproevingen, ERTMS Pilot Amsterdam-Utrecht, **NS Passengers**
Hans Bier Lien, ETCS Advisor, **European Railway Agency**
- 17:45 **END OF DAY TWO**



RAILWAY TELECOMMUNICATIONS PLENARY ROOM

08:15 Congress Registration and VIP Networking Coffee ☕

CREATING NEXT GENERATION HIGH SPEED NETWORKS

- 09:05 **Case study: Introduction of RFF Telecom Networks: Vision 360°**
Talhat Khechen, Head of Engineering, **Telecom, RFF**
- 09:20 **Case study: Developing a high speed next generation network to meet operational and passenger needs**
Jos Holtzer, Head of Project Management and Support, **NS Passengers**
- 09:35 **Case study: Creating futureproof systems to enhance service and reduce costs**
Frans Van Geel, Head of Rail Communications, **SNCF**
- 09:50 **Panel: Creating a comprehensive upgrade plan to meet evolving demand cost effectively**
Talhat Khechen, Head of Engineering, **Telecom, RFF**
Kurt Schmid, Head of Rail Communications, **SBB**
Christian Pattauer, CIO, **WESTbahn**
Marina Aguado, Associate Professor, **University of the Basque Country (Moderator)**
Jos Holtzer, Head of Project Management and Support, **NS Passengers**
Frans Van Geel, Head of Rail Communications, **SNCF**
- 10:30 **Networking Coffee in the VIP Section of the Exhibition Room** ☕

METRO PROJECT FOCUS: DEVELOPING SMART, INTEGRATED METRO NETWORKS

- 11:20 **Case study: Delivering a cost-effective driverless and fully automated system**
Klaus Hestbek Lund, Project Director, **Metroselskabet**
- 11:35 **Case study: Integrating CCTV, IT and PIS systems on the CBTC network successfully**
- 11:50 **Case study: Using CBTC successfully as a business enabler**
- 12:05 **Panel: Creating intelligent telecom networks with CBTC**
Dr Felix Schmid, Professor of Railway Systems Integration, **Birmingham Centre for Railway Research and Education**
Klaus Hestbek Lund, Project Director, **Metroselskabet**
- 12:45 **Networking Lunch in the VIP Section of the Exhibition Room** ☕

MAINLINE PROJECT FOCUS: OPTIMISING OPERATIONS WITH TELECOM SYSTEMS

- 14:05 **Case study: Optimising GSMR while preparing for next generation communications**
Hans Bier, GSM-R Advisor, **European Railway Agency**

14:20 **Case study: Maximising reliability and performance to ensure safety**
Christian Schang, Project Director, **SNCF INFRA**

14:35 **Case study: Meeting operational demands with GSMR and building additional functionality**
Petr Kolar, System Specialist, **Ceske Drahy**

14:50 **Case study: Best practice solutions to optimise operations**
Reserved for **Kapsch**

15:05 **Panel: Utilising telecoms to optimise operations and ensure reliability and safety**
Petr Kolar, System Specialist, **Ceske Drahy**
Hans Bier, GSM-R Advisor, **European Railway Agency**
Christian Schang, Project Director, **SNCF INFRA**

15:30 **Networking Coffee in the VIP Section of the Exhibition Room** ☕

AUTOMATION AND INTELLIGENT TRAFFIC MANAGEMENT

- 16:20 **Case study: Utilising telecoms to create intelligent traffic management systems**
Steve Roberts, Head of Traffic Operations and Management, **RSSB**
- 16:35 **Case study: The impact of ETCS on telecom networks and ensuring intelligent solutions**
Kurt Schmid, Head of Rail Communications, **SBB**
- 16:50 **Case study: Improving asset management with interface integration**
Marc Antoni, Head of Innovation Technologies, **SNCF**
- 17:05 **Panel: Creating a fully integrated and intelligent traffic management network**
Kurt Schmid, Head of Rail Communications, **SBB**
Steve Roberts, Head of Traffic Operations and Management, **RSSB**
Andreas Küster, Group Leader, Traffic Information & Management, **Fraunhofer Institute for Transportation and Infrastructure Systems**
Marc Antoni, Head of Innovation Technologies, **SNCF**

17:45 **END OF DAY TWO**



Register for your delegate pass: www.SmartRailExpo.com

FREE

TUESDAY 25 FEBRUARY 2014

FREE INNOVATION SEMINARS



INNOVATION SEMINAR ROOM A: RAIL IT & WIFI

A3: THE BUSINESS CASE FOR ONBOARD WIFI: DEFINING ROI

- 11:20 Case study: Meeting passenger demands with onboard WiFi to increase ridership
Christian Pattauer, CIO, **WESTbahn**
- 11:35 Case study: The impact of WiFi deployments on passenger numbers: what is the ROI?
- 11:50 Case study: Selecting the right business model to maximise ROI
- 12:05 Case study: The business case for WiFi underground: Can metros use WiFi?

A4: DELIVERING ONBOARD WIFI SUCCESSFULLY

- 14:05 Case study: Delivering WiFi successfully to maximise satisfaction
Anshul Gupta, Executive Director, RailTel, **Ministry of Railways, India**
- 14:20 Case study: Launching a large scale WiFi project cost effectively
- 14:35 Case study: Overcoming challenges to ensure reliability onboard
- 14:50 Case study: Top 5 lessons learned from WiFi implementation

A5: DEPLOYING CCTV & ONBOARD DIAGNOSTICS

- 16:20 Case study: Latest CCTV developments in SNCF network
Bertrand Taquin, Chef de Division Systèmes et Applications, **SNCF**
- 16:35 Case study: Futureproofing CCTV systems for rail
Eduardo Monari, Head of Research Group, Image-based Real-Time Systems, **Fraunhofer IOSB**
- 16:50 Case study: Developing digital CCTV and next generation surveillance
Fivos Andritsos, Technical Manager, **European Commission**
- 17:05 Case study: Next-generation communication technologies for pervasive surveillance
Ozgur B. Akan, Professor, Department of Electrical & Electronics Engineering, **Koc University**
- 17:45 END OF DAY TWO



INNOVATION SEMINAR ROOM B: PASSENGER ENGAGEMENT AND PIS

B3: DEVELOPING PASSENGER APPLICATIONS

- 11:20 Case study: Open data: A traveline perspective
Delivering high quality mobility information for the passenger
Julie Williams, Chief Executive, **Traveline UK**
- 11:35 Case study: Improving the onboard experience with real-time occupancy information systems
Bent Flyen, Advisor in Real-Time Information systems, Operations IT, **NSB**
- 11:50 Case study: Increasing personal mobility for the passenger by converging PIS and smartcard technologies
Chris Lane, Head of Intelligent Systems, **Centro**
- 12:05 Case study: Integrating effective PIS for buses and tramways in Turin
Alberto Forchino, Head of Special Engineering Projects, **Turin Metro**

B4: INNOVATIVE STATION MANAGEMENT

- 14:05 Case study: Delivering accurate passenger information at stations
Matthew Bromley, Station Manager Marylebone, **Chiltern Railways**
David Johnson, Programme Manager, **Chiltern Railways**
- 14:20 Case study: Delivering a more interactive experience for the passenger
Trevor Garrod, Chairman, **European Passenger Federation**
- 14:35 Case study: Establishing additional revenue with effective advertising at stations
- 14:50 Case study: Increasing footfall and reducing delays at stations

B5: PASSENGER ONBOARD INFOTAINMENT

- 16:20 Case study: Defining the future of passenger infotainment: what can operators expect next?
Reserved for **Lufthansa**
- 16:35 Case study: Providing a complete onboard telematics system
Raffaele Raspanti, Head of IT Operations, **NTV**
- 16:50 Case study: Providing a more complete onboard passenger experience
Andrea Gasparri, Head of Customer Operations, **Italo Trains**
- 17:05 Case study: What does the passenger demand onboard?
- 17:45 END OF DAY TWO



INNOVATION SEMINAR ROOM C: FARE COLLECTION AND TICKETING

C3: MOVING TO NEXT GENERATION SYSTEMS

- 11:20 Case study: 'Touch & Travel': Delivering flexible smart phone based ticketing across modes and cross boarder destinations
Ruetger Fenkes, Head of Project and Programme Management, **DB Mobility & Logistics AG**
- 11:35 Case study: Moving towards a successful smartcard system into the future
Philip Quenby, Ticketing technical specialist, **Transperth programme**
- 12:05 Case study: Evolving M Ticketing schemes to reduce costs and increase ridership

C4: DATA MANAGEMENT AND SECURITY

- 14:05 Case study: Ensuring security and safety with next generation systems
- 14:20 Case study: Preventing fraud with smartcard and contactless schemes
- 14:35 Case study: Utilising the additional data to improve service and customer experience
- 14:50 Case study: Understanding passenger needs with data analysis

C5: MAXIMISING FARE REVENUE

- 16:20 Case study: New payment technology: improving the value proposition for the passenger
- 16:35 Case study: Using the potential of ticketing schemes to maximise fare revenue
- 16:50 Case study: The impact of loyalty schemes on revenue
- 17:05 Case study: Exploiting the full commercial benefits of ticketing schemes
Reserved for **Amadeus**
- 17:45 END OF DAY TWO



WEDNESDAY 26 FEBRUARY 2014

PAID CONTENT: STRATEGIC CONGRESSES



SIGNALLING AND TRAIN CONTROL WORKSHOP ROOM

EFFECTIVE TESTING AND CERTIFICATION

- 10:30 Congress registration and networking coffee ☕
- 11:15 Moderator introductory presentation: Reducing certification time and cost with model based solutions
- 11:30 Roundtable Group Discussion: In groups of no more than 10, delegates will debate the following topics, lead by the moderator:
- Reducing costs to certification
 - Automation & certification
 - Effective testing procedures
 - Impact on long term operations
- 12:15 Roundtable feedback to session moderator
- 12:30 Moderator workshop key findings report
- 12:45 Networking Lunch in the VIP Section of the Exhibition Room ☕
- 14:00 Technical site visit 1
- 16:00 END OF DAY 3



RAILWAY TELECOMMUNICATIONS WORKSHOP ROOM

INTELLIGENT IT FOR RAILWAYS

- 10:30 Congress registration and networking coffee ☕
- 11:15 Moderator introductory presentation: Rolling out current and future generation technologies simultaneously
- 11:30 Roundtable Group Discussion: In groups of no more than 10, delegates will debate the following topics, lead by the moderator:
- Maximising the lifecycle of new technologies
 - CAPEX VS ROI
 - Project Management and delivery
 - Impact on reliability and passenger experience
- 12:15 Roundtable feedback to session moderator
- 12:30 Moderator workshop key findings report
- 12:45 Networking Lunch in the VIP Section of the Exhibition Room ☕
- 14:00 Technical site visit 2
- 16:00 END OF DAY 3

“The execution was flawless and the attendance was great. A great success for all of those who attended, I would not hesitate in participating again as sponsor.”

Olivier André, Alcatel-Lucent

WHY SPONSOR OR EXHIBIT?

With over 1000 visitors in attendance with responsibility for rail IT, signalling, telecommunications and technology, SmartRail is the ultimate business development opportunity for credible and innovative suppliers to the rail and metro industry.

If you are looking to increase market presence and build your brand, announce and demo new products, and meet and do business with buyers, you need to exhibit at SmartRail 2014.



Exhibition stands are strictly limited and sold on a first come, first served basis. To reserve your stand please contact:



Ben Green,
Sponsorship & Exhibition Director:
ben.green@globaltransportforum.com
+44 (0)20 7045 0904

SPONSORS & EXHIBITORS



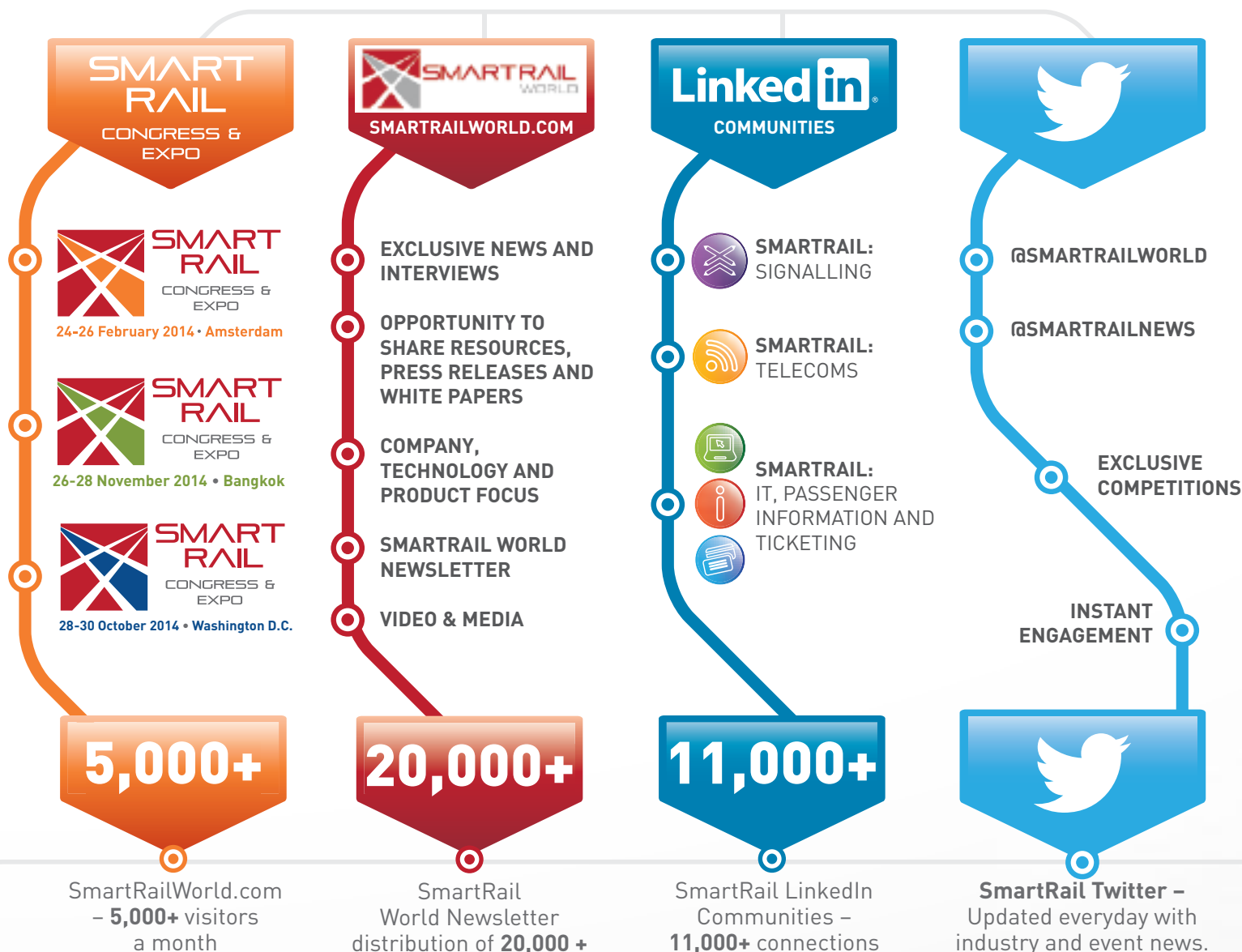
SUPPORTERS



TOP 10 REASONS TO EXHIBIT

- 1 Cut costs and meet all your current and potential customers in one place, at one time
- 2 Maximise the growth of your business by building relationships with colleagues, customers and competitors
- 3 Prove your thought leadership by showcasing your latest innovations
- 4 Raise your profile and show that you are a major industry player
- 5 Maximise interaction to understand what your customers are looking for
- 6 Influence key decision makers and ensure your message reaches key industry figures
- 7 Ensure you are at the cutting edge and keep up with industry trends
- 8 Highlight to all your customers how your solution can help achieve their goals
- 9 Protect your market position and secure crucial growth
- 10 Your competitors will be there. Don't let them win business at your expense

SMARTRAIL IS MORE THAN AN EVENT. IT'S A COMMUNITY.



Register for your delegate pass: www.SmartRailExpo.com

REGISTRATION DETAILS

PLEASE USE CODE **SMEBR1**
WHEN REGISTERING + SAVE A FURTHER
10% WHEN REGISTERING ONLINE

3

**EASY WAYS
TO REGISTER**



WEB: SMARTRAILEXPO.COM
TEL: +44 (0)20 7045 0900
EMAIL: MARKETING@GLOBALTRANSPORTFORUM.COM

CONGRESS DELEGATE PASS + FREE INNOVATION SEMINAR AND EXPO PASS	13/12/2013	24/01/2013	FULL PRICE**
GOVERNMENT/RAILWAY/ METRO	£995.00	£1,195.00	£1,395.00
INDUSTRY SUPPLIER	£1,595.00	£1,795.00	£1,995.00

This pass includes:

- Access to the Signalling & Train Control and Railway Telecoms Congresses
- Access to the innovation seminars on IT & Wifi, Fare collection and Passenger Information
- Access to the exhibition area

FREE INNOVATION SEMINARS AND EXPO PASS ONLY	FREE	FREE	FREE
--	------	------	------

This pass includes:

- Access to the innovation seminars on IT & Wifi, Fare Collection and Passenger Information
- Access to the exhibition area

Prices exclude the local tax rate of 21%

*Discounted rate subject to availability and exclusively for direct employees of government bodies, regulators, railways and metros. Global Transport Forum reserves the right to approve or reject this rate on a case by case basis

**Unpaid or unprocessed registration by the time of the event will be charged at this rate, including £200 processing fee.

CONTACT US:

W: www.SmartRailExpo.com
T: +44 (0)20 7045 0900
E: marketing@globaltransportforum.com

DISCOUNTS

If your company is sponsoring or speaking at SmartRail Europe you will be entitled to a discount. Please email marketing@globaltransportforum.com for more details.

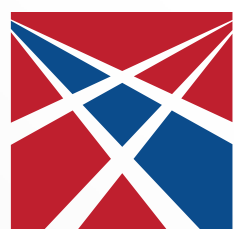
BENEFITS OF ATTENDING AS A GROUP

Take advantage of our technical and strategic streams, breakouts and interactive roundtables by bringing your whole team! Buy 3 passes and get the 4th pass completely free! Additional options available for larger groups, please email marketing@globaltransportforum.com

For terms and conditions please visit www.SmartRailExpo.com

PAYMENTS

- ☐ **OPTION 1:** I would like to pay by card Paying by credit card is the best way to guarantee your place, and the only option after December 31st. To pay by card, call us at +44(0)20 7045 0900 or book over the phone or online. Registration is open NOW!
- ☐ **OPTION 2:** I ENCLOSE A CHEQUE PAYMENT Cheques should be drawn on a UK bank and made payable to: Global Transport Forum Ltd.
- ☐ **OPTION 3:** PAYING BY BANK TRANSFER, PLEASE INVOICE ME This option is not available after 31st December. Registration fees are net of bank charges. If paying by international bank transfer, ensure that your company pays both the sender's and receiver's bank charges. IMPORTANT: In order for us to track your payment and confirm you, please reference the bank transfer with SME14 and the last name of delegate 1.
Bank: HSBC Bank, 88 The Broadway, London N10 3RX
Account Name: Global Transport Forum Ltd
Sort code: 40-04-37 Account Number: 51630148
BIC: MIDLGB214IK IBAN: GB29 MIDL 4004 3751 630 148 Netherlands Tax
Registration: 8233 86107 UK VAT Registration: 972 2224 29



**SMART
RAIL**
CONGRESS &
EXPO

28-30 October 2014

Gaylord National Resort, Washington D.C.

FOR MORE INFORMATION VISIT
WWW.SMARTRAILEXPO-USA.COM



**SMART
RAIL**
CONGRESS &
EXPO

26-28 November 2014

BITEC, Bangkok

FOR MORE INFORMATION VISIT
WWW.SMARTRAILEXPO-ASIA.COM



Register for your FREE exhibition pass: www.SmartRailExpo.com