

MARCH 2012

Progressive Railroading

THE INFORMATION LEADER FOR THE RAILROADING INDUSTRY

IN METRA, THEY'LL TRUST

CEO Alex Clifford is leading a culture-change charge he believes will restore the faith of employees, riders, board members and legislators — and transform Metra into one of the country's 'best-run commuter-rail properties'

CLASS IS STEP IT UP ON THE
SUSTAINABILITY FRONT
PAGE 28

For some railroads, remote real-time locomotive monitoring is the
NEXT LOGICAL STEP
PAGE 35

**PRODUCT UPDATE:
SPECIAL
TRACKWORK**
PAGE 38

➔ WEB EXCLUSIVE:

Transit agencies jointly tackle leadership succession planning
www.progressiverailroading.com/cover

#8065780192# 005 RR 1105 23 120
MARCIAL PONS LIBRERO
DPTO DE REVISTAS
SAN SOTERO 6
MADRID 28037
SPAIN

DL

IN METRA, THEY'LL TRUST

CEO Alex Clifford is leading a culture-change charge he believes will restore the faith of employees, riders, board members and legislators



Photo of Alex Clifford from Chicago Tribune, Feb. 11, 2011 © Chicago Tribune. All rights reserved. Used by permission and protected by the Copyright Laws of the United States. The printing, copying, redistribution, or retransmission of this Content without express written permission is prohibited.

March 2012 • Volume 55, No. 3

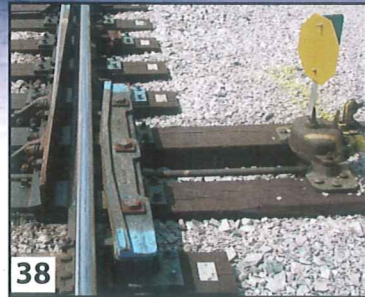
CONTENTS



28



35



38

FEATURES

28 STEPPING IT UP ON THE SUSTAINABILITY FRONT

From equipment purchases to productivity enhancements to stewardship, Class Is are taking bigger footsteps toward shrinking rail's environmental footprint

35 WANTED: AFFORDABLE LOCOMOTIVE HEALTH CARE

For some railroads, remote real-time locomotive monitoring is the next logical step, provided the cost isn't too steep, mechanical execs say

38 SPECIAL NEEDS, SPECIAL SOLUTIONS

Special trackwork suppliers talk product, project and marketplace ideas

DEPARTMENTS

2 CONTEXT

4 TRENDS

6 INDUSTRY NEWS

14 ON THE RIGHT OF WAY BY TONY HATCH

46 PROFESSIONAL SERVICES DIRECTORY

46 CLASSIFIED

48 READER INFORMATION CENTER

48 MEETINGS

SPECIAL SECTION

15 PROBLEM SOLVERS

How two rail industry suppliers zeroed in on customer challenges

WEB EXCLUSIVE CONTENT



→ **Employee exchange** LACMTA, RTD and DART jointly tackle leadership succession planning

www.progressiverailroading.com/PR

→ **New podcast:** Norfolk Southern's Gerhard Thelen describes how the Class I recently began using renewable diesel and why alternative fuels are vital to the railroad

www.progressiverailroading.com/multimedia

→ **Register now:** Progressive Railroading's Maintenance of Way Virtual Conference & Expo, to be held March 28

www.progressiverailroading.com/virtual

→ **Archived webcast now available** Amtrak's PTC Advantage, presented by Amtrak's Keith Holt

www.progressiverailroading.com/webcasts



PROGRESSIVE RAILROADING (ISSN 0033-0817) (Publications Agreement No. 40031401) is published every month by Trade Press Media Group, Inc. Editorial and business offices are at 2100 W. Florist Ave., Milwaukee, WI 53209. (414) 228-7701. Subscriptions: PROGRESSIVE RAILROADING is sent without obligation to railroad presidents, vice-presidents, and qualified personnel in railroad management and supervision in the executive, administrative, operating, mechanical, engineering, purchasing and materials, electrical, signal and communications departments of the railroads. Qualified subscriptions should be requested on railroad letterhead. Subscription price to others: \$8.00 per single copy, \$93.00 per year, \$173.00

(U.S.) 2 years. For subscriptions mailed outside the U.S., \$135.00 (U.S. dollars) per year, \$235 (U.S. dollars) for two years. Add \$150.00 (U.S. dollars) per year for USPS Priority Mail delivery. Periodicals postage paid at Milwaukee, Wisconsin and additional mailing offices. The publishers do not assume responsibility for the validity of the claims made for products described.

POSTMASTER: Please send address changes to Progressive Railroading, P.O. Box 1289, Skokie, IL 60076-8289. CANADIAN return address: Station A P.O. Box 54, Windsor, ON N9A 6J5; custserv@tradepress.com

All packages shipped via UPS, air express or common carrier, plus all general correspondence, should be addressed to: Progressive Railroading, 2100 W. Florist Ave. Milwaukee, WI 53209. Printed in U.S.A.