

**INTERVIEW**

**Rüdiger Grube**  
DB Chairman sets strategy  
for success

**PAGE 28**



**TRACK TECHNOLOGY**

**Autonomous inspection**  
FRA explores track geometry  
recording concepts

**PAGE 41**



# Railway Gazette

**INTERNATIONAL**

## Renewing Europe's railways

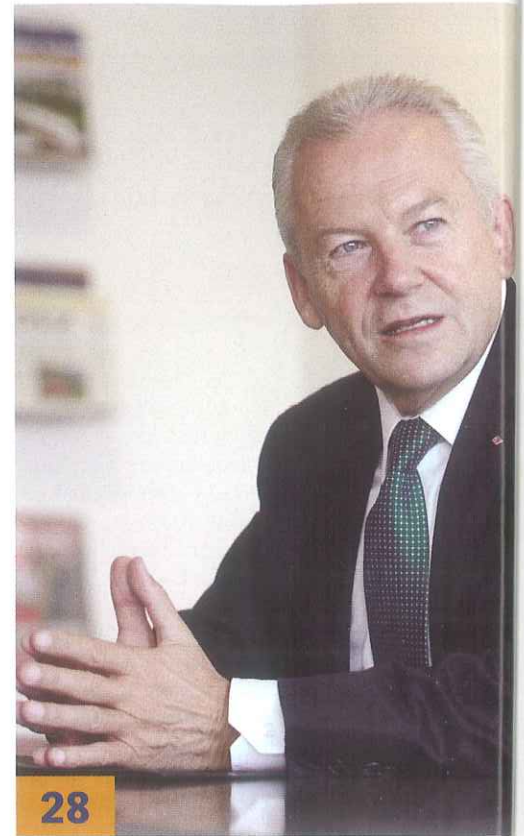


**MATISA**





24



28



**Front Cover:**  
The **Matisa C75** is a high-output balast cleaner which delivers high-quality results through the use of efficient screening technology and advanced guiding systems. Its capabilities have been demonstrated over several years working under various conditions in several European countries.

### 3 Comment

Hot air will not save the planet

## INTELLIGENCE

### 7 Main Line

TasRail awards locomotive contract  
Oaris high speed train on test  
Services begin on LGV Rhin-Rhône

### 13 Urban Rail

Almaty metro opens  
Genève opens Bernex tram extension

### 16 Market

Contracts and tenders

### 19 Innovations

Reflective markers for safer shunting

### 21 Industry

Alstom and TMH develop tram partnership

### 24 Analysis

Mozambique's North-South vision  
Channel Tunnel barriers must go  
Norway needs a long-term strategy

## INTERVIEW

### 28 'DB's image is not good enough'

DB Chairman Dr Rüdiger Grube tells Timon Heinrici that he is determined to focus on the customer, the customer, and the customer again

## EUROPE

### 32 Inter-city rivals break cover

Several open access players entered the European inter-city market with the December timetable change. Murray Hughes reports on the current state of play

### 35 'Fast, agile and fun'

Italian private operator NTV launched its first Italo AGV trainset at its Nola depot on December 13

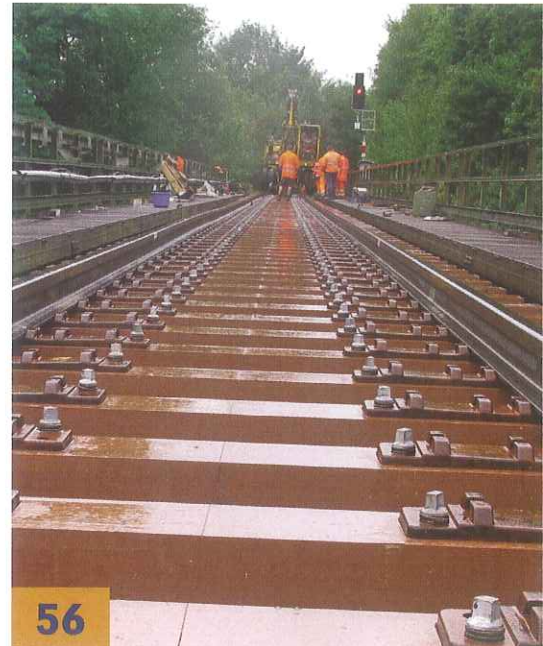
Annual subscription in USA \$245.

Air freight and mailing in the USA by Mercury Airfreight International Ltd; periodicals postage paid at Rahway NJ.

US POSTMASTER: send address changes to:  
Railway Gazette International, c/o Mercury Airfreight International Ltd, 365 Blair Road, Avenel, NJ 07001



35



56

### 38 **Research partnership can deliver a shift to rail**

A pan-European Joint Technology Initiative called Shift2Rail has been launched by supply industry association UNIFE

## TRACK TECHNOLOGY

### 41 **Autonomous measuring of track geometry**

The US Federal Railroad Administration has embarked on a development programme to drive widespread adoption of onboard track monitoring equipment

### 46 **Optimising rail grinding on the Malmbanan**

Work has been underway for more than a decade to extend rail life on Sweden's heavy haul iron ore line

### 53 **Controlling friction delivers longer rail life**

Friction management offers a practical and successful approach to extending rail life

### 56 **DB tries synthetic bridge timbers**

DB Netz has installed its first synthetic wood bridge timbers in Bayern

### 57 **Tools and small plant**

## IN FOCUS

### 58 **Metropolis is ready to roll**

The first of 23 Alstom Metropolis M5 trainsets for Amsterdam metro has been unveiled in Valenciennes

## FORUM

### 60 **People**

Management restructuring at QR National

### 61 **Training & Recruitment**

Deutsche Plasser's 3D tamping simulator

### 62 **Platform**

Publications | Sidetrack

### 64 **Diary | Contact**

### 66 **Viewpoint**

Getting the structure right is key to developing commercially-successful railways, according to Martha Lawrence of the World Bank and Jeremy Drew, Managing Director, Europe, at Hwtrsk

## CONTACT US

Railway Gazette International  
NINE, Sutton Court Road, Sutton,  
SM1 4SZ, Great Britain  
Tel +44 20 8652 5200  
Fax +44 20 8652 5210  
[editor@railwaygazette.com](mailto:editor@railwaygazette.com)  
See p64 for full details